

ALABAMA
MUSIC
TEACHERS
ASSOCIATION

A publication of the Alabama Music Teachers Association
affiliated with the Music Teachers National Association

SOUNDBOARD

Opus 57 * Number 2

March, 2010

President's Message

Inside this issue:

Teacher of the Year Nominations	2
District News	2-3
String Audition	3
Camp Opportunities	1, 15
Conference Info	6-7
Executive Board	11
Association Presidents	16

CAMP OPPORTUNITIES

Samford Prep Adventures in Music Camps

Ages 3—5: June 28—July 2

Ages 1st—12th grades: June 14—18 and July 19—23 for piano and voice

Call 205-726-4049

BSC June 14 – 18 Music Alive Camp

for ages 6 – 13; for students of every level including beginners. Piano, violin, handbells, choir, and ensemble classes. Contact Lucy Victory at 205-226-4960 or online at www.bsc.edu, quick link Conservatory.

As I write this article, I am in the midst of my Lenten journey for 2010. For many who subscribe to the Christian faith, Lent is the time of spiritual reflection and searching that leads up to the celebration of Easter. As I reflected on what I could do for my own Lenten journey this year, I decided to start an exercise routine as my Lenten discipline. I joined a gym, and I exercise several times a week. In the few weeks I have been in this new routine, I have lost a bit of weight, but I have also found myself physically refreshed both from the exercise and from having committed this time to myself each day. When I was in graduate school at Eastman, I was extremely fit, and I exercised six days per week. However, over the past five years, I got out of the habit with the excuse of being too busy, and I gained weight. Perhaps what I am most disturbed by reflecting on what I have learned from my Lenten work this year is how quickly I forgot how much and how clearly my exercise benefitted me, yet how quickly and easily I made excuses five years ago to eliminate perhaps the most beneficial thing in my life from my daily routine, which certainly led rapidly to a physical decline which only I can be responsible for.

While my Lenten journey is unique to me, I cannot help but think about the parallels with our professional lives as

musicians. When we are busy teachers, one of the first things that we eliminate from our schedules is regular practicing, yet I do not believe any of us could effectively argue that daily practice not only benefits our playing but also our teaching and our own emotional well being as it feeds our love of what we do. However, we can quickly make excuses to eliminate this essential professional activity from our lives, and whether we are active performers or not, practicing should be a part of our routine so that we are demonstrating to ourselves and to our students what we are requiring of them.

We can also benefit professionally from a time of reflecting on what we do. So frequently, we are guilty of allowing ourselves to become stuck in a routine that may be stale or uninspiring to us, which will surely filter down to our students. However, we can avoid this by constantly challenging ourselves to evaluate our teaching—consider what is working and what is not. Poll your students and parents for their feedback, and strive to consider new and innovative ideas to keep you and your students engaged. Not only will this help guarantee better student retention, it will also add to your own enjoyment in the studio. If you reach a point that you are stuck, reach out to your

colleagues. Utilize the *American Music Teacher*, *Clavier Companion*, or other journals in the field that are always full of new information. Also, plan to attend workshops offered by your local association as well as the state conference in June to both reflect and come away refreshed. This June, Cynthia Jones has put together a fantastic line up of guests. Our conference artist will be Constance Knox Carroll, and our guest clinicians will be Catherine Rollin and Phyllis Lehrer. Take advantage of these wonderful artist and join us at the University of Montevallo as part of your own professional journey!

—Kevin Chance



Nominations: WHOM DO YOU ADMIRE? WHOSE WORK DO YOU MOST VALUE?

IT'S TIME FOR TEACHER OF THE YEAR NOMINATIONS!

We all know there are those teachers in our midst whose work we especially value and admire. It is time to gather the materials for nominations for the **2010 AMTA Teacher of the Year Award**. There are many deserving teachers and it takes someone like you to nominate a candidate! Nominations are accepted from local associations and from individual members. It does take a bit of effort – but aren't those outstanding teachers worth it? Don't wait until the last minute. Enlist

the help of your local association, your colleagues, students and former students (and their parents) of the teacher. If everyone does a small



part, the file will be filled before you know it!

Go to our AMTA website and under the "Awards" link you will find more information regarding the requirements for the award as well as the nomination form. Nomination files should be sent to:

Kathryn Fouse
Samford University
Division of Music
800 Lakeshore Dr.
Birmingham, AL 35229

District News

Wiregrass Forum

Sonata Festival

Our Sonata Festival was a big success. We had 150 students and 13 teachers participate. Our judges were Ron & Barbara Shinn. All students attended a Recital Etiquette class in addition to their performance for a judge. In these pictures are the winners from Saturday and Sunday's recitals.



DISTRICT IV NEWS

West Alabama Music Teachers Association's fall program featured Kevin Chance in a delightful and informative program titled "Terrific Technique". In November the first Sonatina Festival, sponsored by WAMTA, was held at the University of Alabama. Fifty-one students participated in this event!

SSCC will host the 2nd District IV Auditions this year on April 3rd.

Members are looking forward to the spring meeting featuring Amanda Penick in a master class with pre-college students. The master class will be on April 11 at the Tuscaloosa Public Library from 2:30 pm-3:30 pm. All AMTA members are in-

vited to join us for the program. On April 24 the association will hold its annual HONORS DAY RECITAL featuring outstanding students from the area. Officers for the organization are President- Hyesook Jung, 1st Vice President- Syble Coats, Treasurer and Past President- Muriell Vitt.

Metro Forum

Forum sponsors theory exams and master class

The annual Metro Music Forum Theory Achievement Tests were given on Saturday, January 24, 2009, at Samford University. The tests are based on Fundamentals of Piano Theory by Snell & Ashleigh (Kjos). This year there were 15 participants.

A master class in the new Brock Recital hall was given by William DeVan following the tests, with students of Tatiana Kasman and Barbara Shinn performing.

In the picture: Nick Butler, Dr. DeSa, Madison Murphy, Elizabeth Tsai



Metro Music Forum

Metro Music Forum, the local affiliate of the Music Teachers National Association and the Alabama Music Teachers Association, strives to dedicate its efforts to promote and enhance musical life and education in the Metro Birmingham area including district auditions, master classes, and the annual theory exams in January.

President: Barbara Shinn

Vice-President: Anita Ranelli

Recital Coordinator: Tatiana Kasman

Treasurer/Membership: Kathy Burdette

Secretary: Jody Coombs



Wiregrass Music Teachers' Forum Established 1994

Hilda Hagins, President
Janet Blair, Vice President
Jeanne Focht, Treasurer

LOCAL ASSOCIATION PRESIDENTS
PLEASE SEND ARTICLES FOR THE SUMMER NEWSLETTER BY JUN 15 TO
JODEAN TINGLE AT:

jtingle@bsc.edu or 1411 Mitchell Road
NW Cullman, Alabama 35055



Hello to all String Teachers! We are looking forward to having the AMTA State String Auditions at Dawson Memorial Baptist Church North Building AT 1114 Oxmoor Road in Birmingham, 35209 on April 17, 2010. Please follow the requirements regarding eligibility and procedure for entering the auditions as listed in the Student Activities Handbook 2006-2010 on page 28. Please see "Repertoire Requirements" in Activities Handbook, page 29 regarding repertoire. Only original music will be allowed. Music must be clipped or marked. Theory requirements are listed on pages 30-34. Each student must play one theory examination. (Note: If a student is playing the piano for a chamber music group, and he/she has entered an AMTA piano district audition, then no theory is required for that student at the chamber music audition. Teacher should indicate this on the application beside the student's name.)

Age classification for solo auditions is according to the students' age as of September 1st preceding the audition. To remind you, the divisions are : Division I Ages 6-11; Division II Ages 12-14; Division III Ages 15-18. Concerto auditions are categorized as either Lower Concerto (ages 6-14) or Upper Concerto (ages 15-18). Chamber Music auditions are categorized *Upper* or *Lower* by the age of the oldest student. There is a line on the concerto audition form for you to list the accompanist's name. If there is not a place to list the accompanist on the solo form, please list the accompanist at the top of the page. This is very important.

Teachers should mail to me no later than March 27 two completed copies of the Teacher Application form along with a Student Solo Audition Form (one per student with \$20 fee per student), a Student Concerto Audition Form (one per student with \$20 fee per student) or a State Chamber Music Form (one per group with \$20 fee per group) whichever may apply. *Please print the information on each form.* Each audition form should have stapled to it the appropriate age/instrument theory sheet which can be downloaded and printed from the AMTA website. (<http://almta.org/>) Forms labeled 2009 are okay. Last minute forms can be emailed to me, but checks must be received in the following week! However, you will be scheduled at the ends of judging rounds.

*Include in this envelope one check made out to me to cover fees for all of your entering students or groups. Do not make your check payable to AMTA! All forms with a check must be mailed in a large business size envelope and cannot be folded. I cannot accept forms from students or parents! Please also include a self addressed stamped envelope or email address so that I can mail your student/group audition times. The auditions schedule will also be posted. Time preferences will be honored if possible, but not guaranteed. *Registration is invalid if your check has not cleared by April 2.

My mailing address is:

Sarah Nordlund
4901 Montevallo Rd
Birmingham, AL 35210

got twang?

Get the piano tuned!
Call Brooks Popwell,

certified piano tuner & technician
\$60, normal tuning (uprights & grands)

(864) 593-9600
Tuscaloosa, AL



Also, please note: All students must receive a grade of Outstanding in their theory audition to be chosen as a Winner in the AMTA Chamber Music, Concerto or Solo Audition. All Winners in the string divisions will be scheduled to perform at the 2010 State Conference at the University of Montevallo. Please indicate with an asterisk as directed your selection for the conference if chosen as a Winner.

Directions to Dawson Memorial Church:

From I-65, take Exit 256B (south of Birmingham) to merge onto Oxmoor Rd towards Homewood. After crossing Greensprings Ave., stay right to continue on Oxmoor Rd. Follow signs for Dawson Baptist Church. It will be on your left. The North Building is behind the main sanctuary, connected by a crosswalk, and the auditions and check-in will be on the third floor.

Sarah Nordlund
205-566-9291
nordlund2@gmail.com

Rubrics as Scoring Tools for Musical Performance

The AMTA state auditions are adjudicated performances venues in which students receive performance evaluations and constructive feedback. The current evaluations are formatted as unstructured qualitative evaluations. Individual judges, at their personal discretion, determine the essential qualities of the performances and the relative importance of these qualities as they intersect to reflect the degree or level of competency or excellence in the performance. The number and content of the comments is at the judges' discretions as well, governed by personal inclinations and / or time constraints.

As music performance and teaching has become more heavily influenced by music education practices in recent years, the use of rubrics in performance adjudication has become more widespread. A rubric is a scoring tool that contains two main elements—1) a fixed measurement scale and 2) task descriptors for the characteristics of each point on the fixed measurement scale. Rubrics have been found to be particularly useful for tasks that are difficult or impossible to describe with a single, correct answer because rubrics have the capacity to describe degrees of proficiency or degrees of quality along a continuum.

Two possible reasons for the emergence of rubrics as scoring tools might be their enhanced degrees of reliability and validity over other types of scoring tools. Reliability in scoring refers to the extent that results reflect a pattern. When all judges use the same scoring tool, it is more likely that the results from a set of adjudications will reflect consistent patterns in levels of competency or in degrees of excellence during performance.

In addition to reliability, rubrics can also provide a greater degree of validity than can non-structured qualitative assessments. Validity in assessments refers to the extent that the assessments provide the most appropriate evidence of quality or proficiency in performance. Since the general criteria in the rubric are derived from the most essential aspects of the performance, assessments of all students on the same criteria tend to produce more accurate results for a given adjudicated student population. In this way, more logical and cogent meaning can be derived by individuals and organizations from the specific evidence articulated in the evaluations.

Through their fixed measurement scales and through their task descriptors, rubrics can provide structure to evaluations; however, rubrics are also flexible. First, the assessment criteria are adjustable according the specific goals established by the organization hosting the auditions. Secondly, the fixed measurement scales can be adjusted per division, per level, and / or per event. Thirdly, judges can include additional comments per their musical expertise and judgment by using the comment sections provided on the rubrics or by using additional blank sheets of paper.

Rubrics can be a positive enhancement of performance study for those with an interest in the evaluations. Students can benefit from the use of rubrics because when they are provided with rubrics during their performance preparations, they are aware of the specific qualities upon which their evaluations will be based. Having this information before auditions not only helps students to be better prepared for auditions, it can also help them be more confident on audition days. Teachers can prepare their students more easily and confidently for auditions when they know in advance the aspects upon which the performances will be assessed.

(cont. p. 15)

\$20.10 for 2010

Please put a contribution of \$20.10 to MTNA Foundation for 2010 (or MORE)!! During these hard times, our foundation is very strapped for funds just like everyone else! Observing the massive outpouring of gifts that have been sent to Haiti after the earthquake, I believe that it is our intrinsic nature to give generously to worthy venues. With this thought in mind; I urge every member of AMTA to give generously to OUR foundation this year to keep our chosen field ever strong!!!

Plan now to make your Foundation contribution a top priority on your "to do" list this year. Including it with your dues in the spring is the easiest way to give. However, you may also go on-line or just mail in a check.

I will see you all in Montevallo this summer with my hand out: so, plan now to give generously!!! And, don't forget that we are honoring our own Betty Sue Shepard as a Foundation Fellow this year. To date, I have not received any donations to this endeavor to honor one of most beloved members. Please send a contribution to me or to MTNA Foundation to remember Betty Sue. My address is:

Connie Teague
15120 Teague Lane
Foley, AL. 36535

I look forward to seeing you all in June!

Connie Teague
MTNA Foundation Chair





Samford University
presents

Preparatory Music Camps
Summer 2010
taught by experienced
faculty and staff



Adventures in Music

June 14–18 and July 19–23
for grades 1–12, piano or voice

All Aboard for Music

June 28–July 2
for ages 3–5



726-4049



[http://www4.samford.edu/
arts/music/preparatory.html](http://www4.samford.edu/arts/music/preparatory.html)

Samford University is an Equal Opportunity
Educational Institution/Employer.

A Feast for the Musician's Soul: The 2010 AMTA Conference!

The 2010 AMTA Conference will be at the University of Montevallo, June 10-12, 2010. Our guest clinicians, Catherine Rollin and Phyllis Alpert Lehrer, will be joined by guest artist Connie Carroll in providing inspiration, insight and motivation during the three-day conference. If any of you heard Catherine Rollin's "Technique and Artistry" presentation at the 2009 MTNA Conference in Atlanta, you know that you are in for a real treat. The schedule is full of opportunities for professional growth and development as a teacher. You will have the opportunity to hear six clinician presentations on Thursday and Friday alone! Read more about our internationally-known guests below:



Catherine Rollin is an active pianist, composer, clinician and teacher of prize-winning students. Catherine's pedagogical compositions are recognized worldwide for their combination of musicality and "teachability". In demand as a clinician and masterclass presenter, Catherine has given over 150 workshops including presenting at the MTNA National Conference in 2009, the Goshen Piano Teachers Workshop in 2008 and the National Conference on Keyboard Pedagogy in Chicago in 2007, plus a 2006 seven city tour of Japan that featured the technical insights of her *Pathways to Artistry* series which is translated into Japanese. Rollin's *Pathways* series will also be released in Taiwan in the near future. Catherine Rollin has recently added the role of editor to her published works - with three volumes of masterworks in her *Pathways to Artistry* series. Rollin presented at the Texas Music Teachers Association Conference in June of 2009. Other recent presentations include the workshops for the Indiana Music Teachers Association, the National Piano Teachers Institute, the Music Teachers Association of California, the Utah Music Teachers Associations, Pennsylvania MTA and the New Jersey Music Teachers Association.

Among the many topics that Catherine has covered in her workshops are technique and artistry, mastery of style, use of pedal and composing insights. Additionally, she has been in great demand for masterclasses. She has done masterclasses with performers playing pedagogical works through advanced masterworks.

Students of Catherine's have won state, regional and national awards, including 15 first place winners at the Michigan Music Teachers Association (MMTA) state finals. At the 2009 MMTA State Finals, Catherine's students won first place in all three divisions. One of Catherine's students was an MTNA national finalist in the 2004.

A native of Detroit, Michigan, Rollin received her pre-college training with Mischa Kottler, himself a disciple of Cortot and von Sauer, the latter a pupil of Liszt. Rollin holds the BMA degree with distinction from U. of Michigan and the MM from Oakland U. In 2002, Oakland University distinguished Ms. Rollin with its 2002 Alumni Arts Achievement Award.

Catherine Rollin was featured in both the April 2005 and April 2006 issues of Clavier Magazine. She has also been commissioned by CLAVIER MAGAZINE. Other commissions include: a joint commission by the Michigan Music Teachers Association and the Music Teachers National Association, as well as those from Goshen College, The Midland Music Teachers Association, The Hattiesburg, Mississippi Music Teachers Association, The Topeka and Northeast Kansas Music Teachers Association the Ohio Music Teachers Association and the Georgia Music Teachers Association.



Catherine Rollin is state and nationally certified by the MMTA and MTNA

Phyllis Alpert Lehrer is known internationally as a performer, teacher, clinician, author, and adjudicator. She has enjoyed an active career as a soloist, collaborative artist, and clinician in the United States, Belgium, Canada, United Kingdom, El Salvador, Taiwan, Japan, Sweden, Russia, and the Republic of Georgia. Ms. Lehrer is professor of piano and director of graduate piano pedagogy at Westminster Choir College of Rider University in Princeton, N.J. A founding member of the International Society for the Study of Tension in Performance, she contributes regularly to the Music Teachers National Association, National Conference on Keyboard Pedagogy and World Piano Pedagogy Conference. She has contributed several chapters to their acclaimed book *A Symposium for Pianists and Teachers: Strategies to Develop the Mind and Body for Optimal*

Performance published by Heritage Press and has co-authored, with Barry Green, the *Inner Game of Music Piano Workbook* published by GIA. In addition, she has written practice suggestions for the four books of *Etudes for the Development of Musical Fingers* from the Frances Clark Library (Alfred) and edited *Chopin: An Album* (Carl Fischer) and works by Dianne Goolkasian Rahbee (FJH publications).

With Paul Sheftel, Phyllis Lehrer has co-edited *Debussy: An Album* and the anthologies *Mastering Classic Favorites* and *More Mastering Classic Favorites* for Carl Fischer. Ms. Lehrer's articles, interviews, and reviews on piano pedagogy, music, and health have appeared in *Keyboard Companion*, *Early Childhood Connections*, *Clavier*, and *The European Piano Teachers Journal*. She has recorded for the Educo and Seda labels. In March of 2007 she was honored as a Music Teachers National Association Foundation Fellow, a program that "honors deserving individuals who have made significant contributions to the music world and the music teaching profession."

Ms. Lehrer holds a Bachelor of Arts degree in music from the University of Rochester's Eastman School of Music and a Master of Science in piano from the Juilliard School of Music.



A native of Arizona, **Constance Carroll** began piano studies at the age of five. She has received acclaim for her performances as a recitalist, a chamber musician, and as an orchestral soloist. The featured artist at conventions of the state Music Teachers Associations of New York, North and South Carolina, Virginia, Alabama, Mississippi, Oklahoma, Georgia, Arkansas, Tennessee, Missouri and Louisiana, she has also given lecture recitals at the national MTNA conventions in Houston and Kansas City. Equally adept as a teacher and lecturer, she numbers among her students winners of local, regional and national competitions, and has presented recitals, master classes and lectures at numerous universities and colleges throughout the country.

Ms. Carroll received her education at the University of Arizona and the Eastman School of Music. As a Fulbright scholar, she studied for a year in Vienna and Salzburg, Austria. She then was appointed to the music faculty at Louisiana State University, and subsequently taught at Wisconsin State University, Lenoir-Rhyne College, and was Artist-in-Residence at Centenary College of Louisiana for twenty-one years. She was reappointed to the music faculty at LSU in 1995, and in 1996 became the first recipient of the Barineau Professorship of Keyboard Studies. In recent years, Ms. Carroll

has been on the faculties of Brevard Music Center, the University of Houston High School Piano Camp, the Frank Mannheimer Festival, and the University of Kansas summer piano workshop. She also has served as juror for the New Orleans International Piano Competition, the Missouri Southern International Piano Competition, the American Pianists Association competition, and the national finals of the MTNA Student Competitions.

In the spring of 2001, Carroll was honored with an Excellence in Teaching Award by LSU and the Outstanding Teacher of 2001 Award by LMTA. In the spring of 2002, she was honored at the MTNA national conference in Cincinnati, Ohio by being designated an MTNA Foundation Fellow.

In the near future, Centaur Records will be producing a CD of the Rachmaninoff and Chopin Cello Sonatas with Jeffrey Lastrapes, cellist, and Constance Carroll, pianist.

Accommodations: A limited number of rooms for the 2010 conference will be available at the Ramsay Conference Center on campus for only \$40 per night – single or double! Reservations can be made by calling 205-665-6280. Overflow accommodations will be available in nearby Calera if needed. We look forward to seeing you in Montevallo in June!

Cynthia Perry Jones, AMTA First Vice President

*A Celebration of the Life and Works of Robert Schumann and Frederic Chopin
on the 200th Anniversary of their Birth*



Keyboard Faculty:

Pamela Gordon; Noel Engebretson; Faythe Freese (organ); Tanya Gille; Amanda Penick, chair

Piano Solo Competition for Junior High and High School Students

Saturday, March 27, 2010

The University of Alabama at Tuscaloosa

Repertoire Requirements:

Three contrasting solo works or movements from
different periods played from memory.
One piece must be by Schumann or Chopin.

Application Postmark Deadline:

Monday, March 22, 2010

Non-refundable Application Fee: \$25

Information and Registration Form at

<http://music.ua.edu/departments/keyboard/>

Awards:

Cash and Scholarships to The University of Alabama
School of Music and Crimson Music Camp

Other Celebration Events include:

Recital of university students playing works of
Schumann and Chopin

*Saturday, March 27, 2010 at 5:30 p.m.
in the Concert Hall of Moody Music Building*

Celebrity Series pianist Spencer Myer

*Sunday, March 28, 2010 at 2 p.m.
in the Concert Hall of Moody Music Building
Tickets available by calling (205) 348-7111*

Celebrity Series pianist Spencer Myer
Master class

*Monday, March 29, 2010 at 10 a.m.
in Concert Hall of Moody Music Building*

2010 AMTA Auditions Information

DISTRICT	CHAIR (S)	DATE	DEADLINE
<u>I—Mobile</u>	Connie Sullivan 5766 Duchess Court <u>Mobile, AL 36609 (251)344-4289</u> <i>Vincentine Williams 14 Cannonade Drive</i> <u>Spanish Fort, AL 36527 (251) 626-2712</u> Elizabeth Petro 253 West Street Mobile, AL 36604 (251) 478-6021	April 10	March 19
<u>II-Enterprise</u>	Carol Windham P.O. Box 157 New Brockton, AL 36351 (334) 894-2141 <u>crlwindham@aol.com</u>	April 17	April 2
<u>III-Auburn</u>	Karen Hickok 2525 E. Glenn Avenue Auburn, AL 36830 <u>hickokkaren@bellsouth.net</u>	March 27	March 8
<u>Montgomery</u>	Sarah Cheatham 1651 Sheffield Road Montgomery, AL 36107 (334) 462-1741 <u>scheatham@huntingdon.edu</u>	April 3	March 20
<u>IV-Tuscaloosa</u>	Syble Coats 8714 Hudson Court Tuscaloosa, AL 35405 (205)752-8823 (work) (205) 391-2270 <u>scoats@sheltonstate.edu</u>	April 3	March 20
<u>V-Boaz</u>	Marche Altom 3249 Lakeland Drive Guntersville, AL 35976 (256) 582-3365 <u>mmaltom@yahoo.com</u>	April 17	March 30
<u>VI-Florence</u>	Carol Lynn 335 County Road 12 Florence, AL 35633 (256) 766-6393 <u>clynn356@bellsouth.net</u>	March 27	March 13
<u>VII-Birmingham</u>	Alice Butler 606 1st Street SE Cullman, AL 35055 (205) 585-3554 <u>alicebutler@pianopathways.com</u> Packets to Alice Butler—Checks payable to Barbara Shinn	April 10	March 13
<u>VIII-Huntsville</u>	Frances Schwemmer 126 Robin Lane S.E. Huntsville, AL 35802 (256) 881-6879 <u>eddosch@aol.com</u>	April 10	March 20
<u>State String Auditions</u>	Sarah Nordlund 4901 Montevallo Road Birmingham, AL 35210 <u>sarahnordlund@yahoo.com</u>	April 17	March 27
<u>State</u>	Melodie King 2116 A Montreat Lane Birmingham, AL 35216 <u>mmking@samford.edu</u>	May 14-15	One week after District Auditions Final deadline April 24



TROY

UNIVERSITY

John M. Long
School of Music

Vocal/Choral Music



Offering the following degrees:

B.A./B.S. Music Education—Choral Emphasis

B.A./B.S. Music Education— Instrumental Emphasis

B.A./B.S.— Music Industry

M.S in Education — Vocal/Choral Emphasis

M.S. in Education — Instrumental Emphasis

Vocal/Choral Faculty

Dr. Catherine Allard

Dr. Michael Hix

Dr. Margaret Jackson

Dr. Diane Orlofsky

Mr. Lewis Webb

Vocal/Choral Scholarship Auditions

January 15, 2010

January 16, 2010

February 4, 2010

February 27, 2010

For More Information visit
<http://Music.troy.edu/vocalchoral>



EXECUTIVE BOARD 2009-2010

State President

Kevin Chance
1721 Bienville St
Tuscaloosa, AL 35406
585-750-7894
k.t.chance@gmail.com

Secretary

Jody Coombs
3961 Christopher Dr
Birmingham, AL 35243
205-969-3519
jody_coombs@yahoo.com

**Collegiate Chapters/
College Faculty Forum**

Jeremy Samolesky, NCTM
2428 E. University Dr., #503
Auburn, AL 36830
585-747-7609
jeremypiano@auburn.edu

Local Associations Chair

Barbara Shinn, NCTM
1636 Kestwick Drive
Birmingham, AL 35226
205-834-8321 h
205-335-8736 c
bashinn@gmail.com

State Foundation

Constance H. Teague
15120 Teague Lane #A
Foley, AL 36535-3065
251-979-7130
ctnotes@gulftel.com

Newsletter Editor

Jodean Tingle
1411 Mitchell Rd. NW
Cullman, AL 35055
205-226-4991
jtingle@bsc.edu

MTNA/AMTA Judges Coordinator

Diana Pettit
26755 Pine Drive
Athens, AL 35613
256-230-6826
diana34006@msn.com

Awards Chair

Sarah Cheatham
1651 Sheffield Rd.
Montgomery, AL 36107
334-462-1741
scheatham@huntingdon.edu

**Immediate Past President
Awareness and Advocacy**

Kathryn Fouse, NCTM
3168 Bradford Place
Birmingham, AL 35242
205-726-2489
klfouse@samford.edu

Web Contact/Educational Technology

Don Bowyer
224 Spring Valley Ct.
Huntsville, AL 35802
256-658-2537
256-824-6411 (FAX)
bowyerd@uah.edu

State Certification

Kathryn Burdette, NCTM
2312 Derby Drive
Birmingham, AL 35216
205-979-6862
205-249-1748 c
oubruce@bellsouth.net

**MNTA Competitions Chair
(Young Artist, Senior,
Junior, and Chamber Music)**

Laura Doss
1800 8th Ave. N
Birmingham, AL 35203
205-252-9241
ldoss@asfa.k12.al.us

Public Relations

Susan Bishop
751 County Road 9
Louisville, AL 36048
334-266-5540
pecans@centurytel.net

Clinician

Debbie Gray, NCTM
1417 Secretariat Dr.
Helena, AL 35080
205-243-7936
lilygray@charter.net

State Auditions Coordinator

Melodie King
2116 Montreat Lane #A
Birmingham, AL 35216
205-823-9453
mmking@samford.edu

Historian

Sallye Jeffcoat
120 15th Street East #321
Tuscaloosa, AL 35401
334-546-9834
sajeffcoat@bama.au.edu

**1st Vice-President
(President Elect)**

Cynthia Jones
1351 Highland Street
Montevallo, AL 35115
205-655-5445
ionescp@montevallo.edu

**2nd Vice-President
(Membership)**

Karolyn Rice
1000 Homarda Drive
Anniston, AL 36207
256-237-4073 h
256-343-1849 c
krice@hiwaay.net

Treasurer

Susan Berg, NCTM
3205 Monte D'Este Way
Birmingham, AL 35216
205-978-9055
susanruckerberg@gmail.com

Independent Music Teachers Forum

Frances Schwemmer, NCTM
126 Robin Ln. SE
Huntsville, AL 35802-1002
256-881-6879
eddosch@aol.com

**Composition Competition/
Commissioning**

Charles Mason
900 Arkadelphia Rd.
Box 549033
Birmingham, AL 35254
205-226-4950
cmason@bsc.edu

Grant Writer

Brent Reeves
3508 Laurel View Road
Hoover, AL 35216
205-979-6472
brentreevespiano@bellsouth.net

**AMTA Collegiate/Non-Piano, Non-Strings
Coordinator**

Moya Nordlund
5228 Meadow Garden Lane
Birmingham, AL 35242
205-980-8170
mlnordlu@samford.edu

Advertising Chair

Connie Macon, NCTM
341 Red Maple Drive
Columbiana, AL 35051-3753
205-726-2810
chmacon@samford.edu

Piano Studies at Auburn University

Piano Faculty

Laurelie Gheesling, M.M.

Jeremy Samolesky, D.M.A.

Henning Vauth, D.M.A.

Degrees:

Bachelor of Arts in Music (Performance)

Bachelor of Music Education

Master of Education in Music Education

Specialist in Education in Music Education

Doctor of Philosophy in Music Education

*For information on Brass, Woodwind, Percussion and Voice areas
please visit our web site at: <http://www.auburn.edu/music>*

For More Information Contact:

Department of Music
101 Goodwin Music Building
Auburn, AL 36849-5420
Phone: 334 844-4165
Fax: 334 844-3168



AUBURN
UNIVERSITY

COLLEGE OF LIBERAL ARTS
Department of Music

NEWSLETTER/WEBPAGE AD RATES

Ad Size	3 Issues	2 Issues	1 Issue
Full page (7 ½" x 10")	____\$300	____\$210	____\$110
Three-column half page (7 ½" x 5")	____\$270	____\$200	____\$100
Two-column half page	____\$255	____\$160	____\$90
Three-column quarter page	____\$195	____\$140	____\$75
Two-column quarter page	____\$155	____\$110	____\$60
One-column half page	____\$155	____\$110	____\$60
One-column quarter page	____\$75	____\$55	____\$30
One-column eighth page	____\$55	____\$45	____\$25

NEWSLETTER/WEBPAGE AD RATES *FOR LOCAL ASSOCIATIONS*

Ad Size	3 Issues	2 Issues	1 Issue
Full page (7 ½" x 10")	____\$240	____\$170	____\$90
Three-column half page (7 ½" x 5")	____\$215	____\$180	____\$80
Two-column half page	____\$205	____\$130	____\$70
Three-column quarter page	____\$155	____\$110	____\$60
Two-column quarter page	____\$125	____\$90	____\$50
One-column half page	____\$125	____\$90	____\$50
One-column quarter page	____\$60	____\$45	____\$25
One-column eighth page	____\$45	____\$35	____\$20

If you wish to put an ad in the SoundBoard, the deadlines are:

October 6 for the November issue; February 6 for the March issue; June 20 for the July issue.

Send your information to:

**Connie Macon
School of the Arts
Samford University
800 Lakeshore Dr.
Birmingham, AL 35229**

**205-726-4020 (fax)
205-726-2810 (office)
chmacon@samford.edu**

AMTA District Piano Audition for the Huntsville Area (District VIII) Information

All of the information is on our Huntsville Music Teachers Web site.

Click on: hsvmta.org.

Click on: Piano Auditions

Click on: 2010 District Piano Audition Information Letter

Deadline: March 20 (completed forms mailed to
Frances Schwemmer with 1 check enclosed)

Audition Date: April 10, First Baptist Church, 600 Governors

Drive, Huntsville, AL 35801 (mapquest)

Questions: Frances Schwemmer, chair

[Email—eddosch@aol.com](mailto:eddosch@aol.com)

Telephone calls: 256-881-6879



UNIVERSITY OF MONTEVALLO

DEPARTMENT OF MUSIC

an All-Steinway School
offering Bachelor of
Music degrees in:

- Performance
- Pedagogy
- Music Education

and Bachelor of Arts
degree in Music

*Inspired by the past,
dedicated to the future.*



Offering small class size
and personal attention
in a public liberal arts setting

Host of the 2010 AMTA Convention and AMTA State Auditions



Thinking about a degree in music?

Come spend a day with us!
Attend music classes for a day,
complete with a sample lesson
in your major area.

High school piano students & teachers:
Plan now to join us for master
classes and performances during
Piano Day at Montevallo
Saturday, November 21, 2009

www.montevallo.edu/music

To schedule a visit or sample lesson, contact Dr. Cynthia Jones,
Keyboard Area Head: 205-665-6667, jonescp@montevallo.edu

Rubrics—p. 4

Organizations such as AMTA can use rubrics to identify what they consider the important aspects of effective and communicative performances. In addition, when rubrics are used throughout large geographical areas, they tend to provide a greater degree of consistency in results across districts or across states. As a result, this greater degree of consistency in the adjudication process tends to improve the credibility and reputation of hosting organizations as a whole. For the public, the use of rubrics can articulate an organization's performance expectations, its degree of commitment to excellence, and its level of professionalism.

Judges can find it informative and instructive to know in advance what qualities they should assess and how they should determine degrees of excellence as defined by the hosting organization. The consistent use of rubrics can also help to improve the interjudge reliability factor. By improving this continuity between the evaluations of a multiplicity of judges during auditions, the evaluations are more consistent in a given year and students overall tend to experience more consistency in evaluations from year-to-year.

Please peruse the list of resources included below for more information on using rubrics in performance evaluations.

Diana A. Pettit

State Judges Coordinator

Email: Diana34006@msn.com

Phone: 256.230.6826

Website: www.dianapettitpianostudio.com

Resources and Further Reading:

Andrade, Heidi Goodrich. "Teaching with Rubrics." *College Teacher* 53, no. 1 (Winter 2005): 27 – 30.

Ciorba, Charles R. and Neal Y. Smith. "Measurement of Instrumental and Vocal Undergraduate Performance Juries Using a Multidimensional Assessment Rubric." *Journal of Research in Music Education* 57, no. 1 (2009): 5 – 15.

Colwell, Richard. "Assessment's Potential in Music Education." *The New Handbook of Research on Music Teaching and Learning*. New York: Oxford University Press, 2002.

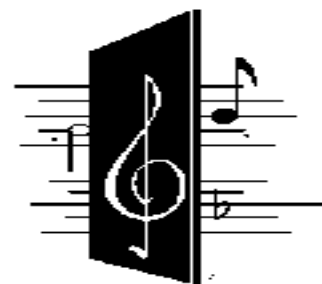
McTighe, Jay and Grant Wiggins. *Understanding by Design: Professional Development Workbook*. Alexandria, Virginia: Association for the Supervision and Curriculum Development: 2004.

Wiggins, Grant and Jay McTighe. *Understanding by Design*, (expanded 2nd ed.) Alexandria, VA: Association for Supervision and Curriculum Development, 2005.

The Montgomery Music Teachers Forum

Our Current Membership Includes:

Leslye Ames
Evaughn Balkcom
Sharla Bender
Susan Bishop
Judy Brasher
Greta Champlin
Sarah Cheatham
Eun Yi Shin Chung
Josephine Crenshaw, NCTM
June Dillard
Ruth Dunbar
Carrie Edwards
Mary Edwards
Kathy Elder
Corine Free
Dorothy Fuller
Betty Gallops
Dr. Theresa Gordon, NCTM
Ruth Graham
Sally Hester
Skye Jenkins
Stephanie Jones, NCTM
Michelle Kuykendall
Aishya Marrow
Janis McCulley
Nora McGalliard
Sarah Morelock
Beverly Shaffer
Barbara Shinn, NCTM
Dr. Ron Shinn, NCTM
Ann Thorington, NCTM
Patsy Vines
Elaine Wanous
Summer Whatley
Cathy Whigham
Fran Wilkinson
Donna Wilson, NCTM
Hui-Ting Yang



MMTF sponsors the annual Mark McGowin Recital in the Fall, the Helen Boykin Festival and Honors Recital each spring, the Montgomery District III AMTA Auditions, and the Helen Boykin Scholarships, several annual awards to outstanding music students who have a high level of musical achievement.

SUMMER CAMP OPPORTUNITIES

BSC June 14 – 18 Piano Camp led by Lucy DeSa and William DeVan – intermediate to advanced piano students. Students will receive 4 private lessons, participate in master classes, work in an ensemble setting and will perform in a recital at the close of camp, Friday, June 18th. Contact Lucy Victory at 205-226-4960 or online at www.bsc.edu.

2010 Piano Discoveries Camp June 13-19, students from across Mississippi and other southern states;

<http://www.outreach.olemiss.edu/youth/piano/>

Ian Hominick, Department of Music, University of Mississippi
University, MS 38677, Tel. (662) 915-1282, ihominic@olemiss.edu
<http://www.ianhominick.com>

The 7th Annual University of Montevallo Young Musicians' Camp will be June 20-25, 2010, and is designed for pianists, singers and instrumentalists, ages 12-18. Tuition, including room and board, is \$350.00. Daily schedule includes theory, ear training, duet rehearsal/coaching, masterclass, piano literature, and more. A limited number of full and partial scholarships are available. The scholarship application deadline is May 30, 2010.

<http://www.montevallo.edu/music/youngmusicianscamp09.shtm>

Contact Camp Director Gary Packwood at 205-665-6675, or email packwoodgd@montevallo.edu

Samford Senior Piano Camp, Samford University, Birmingham
June 20-June 26, 2010; Ages: Age 12 through high school senior;
Contact: Dr. Ronald Shinn, rshinn@samford.edu, 205-726-2501

ALABAMA MUSIC TEACHERS ASSOCIATION

Jodean Tingle, SoundBoard editor
1411 Mitchell Road NW
Cullman, Alabama 35055

205-226-4991
jtingle@bsc.edu

A publication of the Alabama Music
Teachers Association
affiliated with the Music Teachers
National Association

www.almta.org

Have a pedagogical or business issue or question?

E-mail the MTNA Professional Support Line.

The Professional Support Line is a way for MTNA to provide assistance to members who have questions of a pedagogical or business nature and would like to consult with someone knowledgeable about their situation.

Rachel Kramer, NCTM, is an MTNA volunteer who has offered her expertise to MTNA's Professional Support Line. Simply send her an e-mail, and she will be sure to get back to you.

Rachel has been a vital part of MTNA for many years, serving as assistant executive director from 1998–2001 and director of education and member liaison for MTNA from 2003–2009. She holds master's degrees in piano performance and pedagogy and has been president of the Music Learning Center, Inc. in Cincinnati for 13 years. Rachel was also manager of educational programs for the Baldwin Piano & Organ Co. from 1990–1996. Currently, she is an Adjunct Faculty member at Wilmington College and is president-elect for the OMTA-Southwest District MTA.

The Professional Support Line is available to members of MTNA to support day-to-day questions in two broad areas—pedagogy and business. Past questions addressed have included such topics as information on grants, music, acoustical standards of building a new music facility, ASCAP issues, Certification, copyright issues, developing a plan to become a music teacher, creating relationships between other music organizations and local MTNA affiliates, writing studio policies, finding out of print music, music merchandise questions, prospective member information, lesson fee structure, assistance helping a member supplement their dues through local and state support, health insurance, special learners, finding other music teachers, non-compete agreements, independent contractor/employee contracts, buying and selling music studios, contractual arrangements with ensembles and partnerships and zoning. The Professional Support Line is also the point of contact for any legal consultation services. To reach Rachel and the Professional Support Line, simply e-mail professionalsupport@mtna.org.

Local Association Presidents

Auburn-Opelika Music Teachers Association (III)

Jane Patterson (Co-President)
342 Lee Rd 957
Opelika, AL 36801
334-745-6815
jcpatters@bellsouth.net

Amy Jensen (Co-President)
331 Mockingbird Ln
Auburn, AL 36830
334-821-2994
majmc1@bellsouth.net

Baldwin County Music Teachers Association (I)

Jeanne O'Connell
724 Holly Dr
Fairhope, AL 36532
251-928-2055
bobxjoc@aol.com

Huntsville Music Teachers Forum (VIII)

Wendy Bramhall
300 Natchez Trail
Huntsville, AL 35806
256-722-9362
wendybramhall@me.com

Website: www.hsvmta.org

Metro Music Forum (VII)

Barbara Shinn
1636 Kestwick Drive
Birmingham, AL 35226
205-834-8321
bashinn@gmail.com
Website: <http://birminghammusicteachers.homestead.com/>

Mobile Music Teachers Association (I)

Kassy Wooley
3551 Wooley Rd
Mobile, AL 36693
Phone: (334) 666-2536
kassywooley5@aol.com
Website: www.MobileMTA.org

Montgomery Music Teachers Forum (III)

Gordon, Theresa G
3970 Croydon Rd
Montgomery, AL 36109
334-279-8073
hailcaledonia@yahoo.com

Northeast Alabama Music Teachers

Association (V)

Karolyn Rice
1000 Hormanda Dr
Anniston, AL 36207
256-237-4073
krice@hiwaay.net

Shoals Area Piano Teachers Forum (VI)

Noel Beck
229 W. Lelia Street
Florence, AL 35630
256-767-6186
noelmbrobwb@comcast.net

West Alabama Music Teachers Association (IV)

Hyesook Jung
4421 1st Ave E
Northport, AL 35473
205-799-6211
msjung38@hotmail.com

Wire Grass Music Teachers Forum (II)

Hilda H. Hagins, NCTM
113 Redwing Dr.
Enterprise, AL 36330
334-347-7526
hvhagins@aol.com