

AMTA

SOUNDBOARD



OPUS 55 * NUMBER 3

July, 2008

PRESIDENT'S MESSAGE

As I sit in LaGuardia Airport...I am shocked at how quickly the summer has passed, and I am overwhelmed by the start of a new semester in a few short days. As music educators, we teach in a unique environment. Many of us maintain private studios; many of us teach in community music schools; many of us serve college and university faculties; and many of us teach in public and private music classrooms throughout the state. To further complicate matters, many teachers fall into two or more of the above categories. Having taught in many of the above scenarios, I am aware that each situation has its unique rewards and challenges, but as a professional organization, we are charged to create a network that supports each of our members.

The national MTNA office provides a number of support opportunities, including insurance plans, and I strongly encourage you to visit www.mtna.org to see which of these programs might benefit you or your studio. However, beyond the programs that the national office strives to offer, we must also consider how we can best support each other as colleagues at the state and local levels. From my perspective, perhaps the most powerful mechanism we have in place to provide a supportive, functional environment is our Code of Ethics, which may be reviewed online.

One of the beauties of music is that every work in our repertoire can wear as many faces as the number of people who choose to learn it, and while not every one of

those interpretations will suit every taste, validity can likely be found in each approach. Likewise, in our teaching, there are as many styles of teaching as there are teachers working each day, and while we may not share common philosophies or aesthetics with all of our colleagues, we can again find validity in each approach. Additionally, I have found that some of my most powerful opportunities to learn evolved from situations where I found my pedagogical and musical beliefs to be the most challenged. Therefore, the differences that exist among us are something to be embraced, nurtured, and celebrated, but often, our own short-sightedness keeps us from maintaining the respect that is necessary to engage in these discussions.

As I begin my term as president, I would like to encourage each of us to consider our words before making a disparaging or critical remark about a colleague. Words can wound deeply, and our professional world is too small for these wounds to heal quickly. Additionally, I would like to remind the membership that it is never appropriate under any circumstances to approach a student or the parent of another teacher's student with the intent of recruiting someone into your studio. This behavior is unacceptable and cannot be tolerated; it is the loose thread that will quickly unravel a beautiful tapestry. I am always deeply saddened when I hear of such allegations, and I will be exploring options for how these grievances can be addressed in a

professional, unbiased manner within our organization.

This summer, I have had the opportunity to travel to Tennessee, New York, Iowa, and Louisiana, and I have interacted with many teachers. When I have spoken about what we are doing in Alabama, I am proud to say that I have found myself able to speak with confidence that we are offering many wonderful opportunities for our teachers as well as our students, but we must always collectively work to make our organization as strong as possible. I would like to challenge each of you to consider our charge to respect each other both personally and professionally, and we will be making a huge stride towards further strengthening the fabric of our organization.

I look forward to serving you for the next two years, and do not hesitate to contact me if I can be of assistance to you, your studio, or your local association.

Respectfully,

Kevin Chance



Inside this issue:

District News	2
Teacher of the Year	3
AMTA Piano Winners	4, 6
AMTA Honorable Mentions	7, 10-11, 9
String Winners	14
Board of Directors	15

Special points of interest:

- STATE AUDITION INFORMATION
- LIST OF STATE WINNERS
- NEW BOARD OF DIRECTORS

DISTRICT NEWS

The West Alabama Music Teachers Association will hold its fall meeting October 4, 2008, at 10:00 am. At Southeastern Music Gallery, 5500 Old Montgomery Highway in Tuscaloosa. (SMG is located off Skyland Blvd. behind Kmart.) Tanya Gille, Professor of Piano at the University of Alabama will present a program entitled "Outstanding Christmas Music for Beginners and Intermediates". The meeting is open to all teachers and interested persons.

Wiregrass Music Teachers' Forum held its 15th annual Honors Recital on May 4 at First Baptist Church in Enterprise. Students who have received various music honors during the year were invited to participate. One of the goals of the Forum is to be able to present scholarships to encourage students to

attend summer piano camp and to give scholarships to high school seniors who are going to major in music. At the conclusion of the program scholarship awards were presented to John Keyton and Jenny who were plan-

ning to attend Piano Camp at Samford University in June. Rebecca Binford will be attending the University of Alabama in the fall to major in music, and

we were pleased to be able to present a scholarship to Rebecca. Rebecca has studied with Jeanne Focht for ten years, and John and Jenny are students of member Andy Martin.



ning to attend Piano Camp at Samford University in June. Rebecca Binford will be attending the University of Alabama in the fall to major in music, and

in the recital.

—Hilda Hagins, WMTF President

District I News July 08

February 7, 2009 will be Mobile MTA's 40th annual sonata contest, and we have two sonatinas especially written for this contest. Jane Bastien wrote "A Jazzy Sonatina" and dedicated it to MMTA. It is available in music stores, published by Kjos. Elementary level.

Melody Bober wrote "Suite Alabama: A Jass Sonatina" and dedicated it to MMTA. It will be available by August 1. This one is of particular interest to the entire state and is noteworthy for that point as well as a delight to play. It has been put in Alfred's Recital Series. Early intermediate level.

Montgomery Music Teachers Forum

Celebrating over 35 years of commitment to music teaching in the Montgomery area!

Giving \$400 in Boykin Festival scholarships and funding a full-tuition scholarship to the Huntingdon Junior Piano Camp.



Proud Sponsors of the following Events:
 ~McGowin Recital
 ~Janis McCulley Hymn and Scale Festival
 ~Boykin Festival
 ~AMTA District III Montgomery Auditions

AMTA TEACHER OF THE YEAR

has held offices both in the Mobile and

develop character and self-esteem in her students. She encourages all students, not just those musically gifted, to perform in recitals, competitions, auditions and various community and church functions. Her influence is far-reaching providing quality instruction to those preparing for professional careers as well as those studying music for personal enrichment and enjoyment. A person always willing to serve and to help, we congratulate Vincentine Wil-

During the 2008 Alabama Music Teachers Association Conference, Vincentine Williams received the AMTA Teacher of the Year award. The award is presented annually to a member who exhibits excellence in teaching, musicianship and service to AMTA and the community.

Baldwin County Music Teachers Associations and has coordinated the Annual Sonata Contest sponsored by the MMTA.

Vincentine, from Spanish Fort, AL, has been teaching for over 38 years. She holds a Bachelor of Music degree from the University of Southern Mississippi and a Master of Fine Arts degree in piano performance from Tulane University in New Orleans where she studied with concert pianist Sylvia Zarembo. She has also done advanced study in piano with artist teachers in New Hampshire and France.

Mrs. Williams is organist and choir director at Ascension Lutheran Church in Daphne. She has taught Music Appreciation at Faulkner Community College and Eastern Shore Institute for Lifelong Learning in Fairhope. Presently, she operates an independent studio in Spanish Fort where she resides with her husband, a retired court reporter and classical pianist. She is an active member of the Schumann Club of Mobile where she performs regularly on concerts and has taught for many years at the Summer Music Camp at University of Mobile.

Mrs. Williams maintains membership in several local, state and national professional organizations and is permanently certified by the Music Teachers National Association. She has been on the Executive Board of AMTA as the State Certification Chairman and as tri-chair of District I. She

Vincentine believes that music contributes to the intellectual, spiritual, social, and emotional growth of an individual and that it develops creativity, self-confidence and discipline of mind and body. Her goal in teaching, therefore, is to



From the State Certification Chair

Congratulations to newly certified members Wendy Faughn of Piedmont and Susamme Gilmer of Sterrett.

A note to members who need to recertify every five years. Take a moment every June (right after the convention when you are energized) to update your files for your recertification activities and points. Then when the fifth

year rolls around, you will not be frantically trying to remember your activities and trying to find documentation for your achievements.

If you are interested in becoming certified, contact Kathy Burdette or check the MTNA website certification tab.

—
Kathy Burdette

THANK YOU!

Susie Dempsey and Barbara Laurendine each contributed to the Da Capo Fund.

the Annotation Toolbar. This set of tools includes a pen, with several different colors and line widths, a highlighter, a typed-text tool, and an eraser that removes any or all annotations.

Loading Music

Loading music into the MusicPad Pro is done via a USB connection to a Windows or Macintosh computer. Music can be purchased and downloaded from the FreeHand website, or converted from files on the computer – including PDF files and scanned images. The FreeHand store (<http://www.freehandmusic.com/>) says that it has over 110,000 sheet music files available for download. Of course, many of these are vocal/piano arrangements of pop music, but there are also a large number of classical pieces. The process of scanning and importing music you already own is straightforward, so your library doesn't have to cost anything beyond the initial purchase price.

Accessories

The MusicPad Pro comes with a charger and USB cable. Optional accessories include a tripod floor stand (also includes a 6" tabletop stand), a carrying bag, and a foot pedal.

Pros and Cons

TECHNOLOGY NOTES

MusicPad Pro - Digital Music Display

Having now been available for almost four years, the MusicPad Pro may be a device that technology readers want to know more about. With a list price of \$899, and very little discounting, it may still be out of reach for most budgets, but progress is never cheap!

Available from the manufacturer, FreeHand Systems (www.freehandsystems.com), or from a variety of online electronic music stores, the MusicPad Pro is a digital music computer tablet, similar in many ways to eBook readers. In the case of the MusicPad Pro, sheet music can be downloaded into the device, displayed for performance or practice, and stored for future use.

Size

The MusicPad Pro is about the size of a large music book, at slightly less than two inches

thick. The exact dimensions are 13.3" x 9.9" x 1.8" and the weight is about four pounds. This may seem like a lot until you realize that it can hold literally thousands of pages. By my rough file-size calculations on half a dozen pieces of music, the 64MB of flash memory should hold over 5000 pages! It also has a USB port that allows you to add a flash drive.

Turning Pages

A simple tap on the right edge of the screen turns the page forward, while a tap on the left edge goes back a page. It is also easy to set up jumps back several pages for a repeat or *Dal Segno*. An optional foot pedal can be used to go forward instead, although this may interfere with serious piano work!

Annotations

If the MusicPad Pro were merely a reader, it might still be useful for traveling musicians who want to lighten their sheet music loads. One of the greatest features of the device, however, is

AMTA STATE WINNERS

AMTA Pre-College

LOUISE MCALLISTER SCHOLARSHIP WINNER (Piano)

Minjoo Jo, Prattville.....Ronald Shinn

IDA TRUSS SCHOLARSHIP WINNER (Piano)

Crystal Wu, Birmingham.....Kevin Chance

Piano Concerto, Division III

Minjoo Jo, Prattville.....Ronald Shinn

Mary Price, Marion.....Kevin Chance

Wendy Zhao, Vestavia HillsYakov Kasman

Piano Concerto, Division II

Alex Chen, Huntsville.....Frances Schwemmer

Edward Forstman, Vestavia HillsYakov Kasman

Aleksandra Kasman, Vestavia HillsYakov Kasman

Forrest Moody, ChildersburgKevin Chance

Piano Concerto, Division I

Botong Ma, Vestavia HillsTatiana Kasman

Yah'el Yisrael, BirminghamKevin Chance

Piano Solo, Division III

Josephine Chen, Vestavia HillsTatiana Kasman

Alan Chou, HuntsvilleIngrid von Spakovsky Weaver

Ryan Currie, Mobile.....Elizabeth Petro

Jacinth Greywoode, Montgomery.....Barbara Shinn

Max Hill, Mobile.....Barbara Laurendine

Cynthia Huynh, Hoover.....Yakov Kasman

Minjoo Jo, Prattville.....Ronald Shinn

Mary Kate McLaurine, NorthportNancy Wingard

Stephen Moore, BirminghamNancy Wingard

Mary Price, Marion.....Kevin Chance

Shea Summerlin, Montgomery.....Ronald Shinn

Tyler Winston, Spanish Fort.....Vincentine Williams

Crystal Wu, Birmingham.....Kevin Chance

Wendy Zhao, Vestavia HillsYakov Kasman

Piano Solo, Division II

Aleksandra Belotserkovskaya, Vestavia HillsTatiana Kasman

Wesley Bibb, Birmingham.....Kevin Chance

Adam Brown, AnnistonBrent Reeves

Daniel Brown, AnnistonBrent Reeves

Benjamin Burleson, SatsumaCarol Evers

Aaron Cheng, Montgomery.....Beverly Shaffer

State Audition News

Next year's State Auditions will be held at the University of Montevallo on May 15-16, 2009. The final date for District Auditions will be April 18, 2009.

One very important change voted and passed on by the board is a new rule about conference performance pieces. Due to the length of the recitals, we will, effective immediately, have time limits on the winners' recital pieces. The limit for Division I pieces is 3 minutes, Division II pieces is 4 minutes, Division III pieces is 6 minutes and Concerti (including second piano tuttis) will be limited to 12 minutes. Our other choice was to decrease the number of winners, but we really did not want to do that! Students will be required to play all pieces, including concerti, in their entirety for the auditions; this time limit ONLY affects the recital performances. We also discussed the possibility of having more than one recital per division, but that is not a practical solution because most of our possible conference venues do not have sufficient space for concurrent recitals. So please plan ahead when choosing students' audition pieces in the future. Cuts will be allowed for conference performance only; again, let me emphasize that pieces must be heard in their entirety for the auditions.

The Student Audition forms and Teacher Application forms will be in the next Soundboard; remember, only current forms with the year "2009" will be accepted.

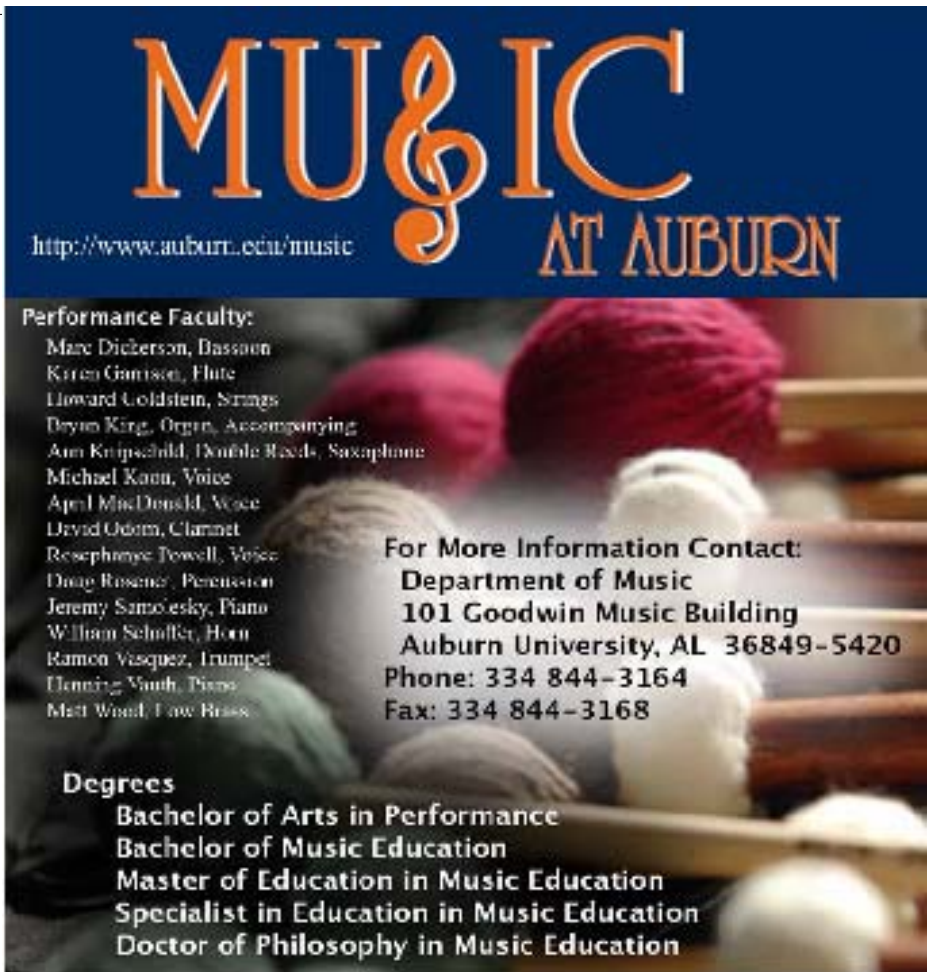
I hope everyone has a restorative summer!

A note of thanks.....

I want to express my deep appreciation to the Board for honoring me with the first Distinguished Service Award. The plaque is just beautiful and I was beyond surprised when that presentation was made at the board meeting! Thank you all so much! I also want to thank everyone who helped make the State Piano Auditions run smoothly in my unexpected absence! Thanks to all of you who helped at the registration desk, and special thanks to those who stayed into the evening hours on Saturday to help with the final paperwork.

And finally, enormous thanks to Alice Butler, who came and spent Thursday night of that week at my house, packing up everything to go to Montevallo, finishing the last minute details and familiarizing herself with my computer files so she'd know where to find everything!

- Debbie Gray



MUSIC

AT AUBURN

<http://www.auburn.edu/music>

Performance Faculty:
Marc Dickerson, Bassoon
Karen Gamison, Flute
Howard Goldstein, Strings
Deyan King, Organ, Accompanying
Ann Krupschuld, Double Bass, Saxophone
Michael Kana, Voice
April MacDonald, Voice
David Odum, Clarinet
Resaphange Towell, Voice
Dana Rossene, Percussion
Jeremy Samolesky, Piano
William Scholler, Horn
Ramon Vasquez, Trumpet
Honning Vauth, Piano
Matt Wood, Low Brass

For More Information Contact:
Department of Music
101 Goodwin Music Building
Auburn University, AL 36849-5420
Phone: 334 844-3164
Fax: 334 844-3168

Degrees
Bachelor of Arts in Performance
Bachelor of Music Education
Master of Education in Music Education
Specialist in Education in Music Education
Doctor of Philosophy in Music Education

*2001 Recipient of the first annual
MTNA LOCAL ASSOCIATION OF
THE YEAR AWARD*



Our object is to promote the study & performance of music in Baldwin County and to create & maintain an organized center for the advancement of musical knowledge & education among the teachers of Baldwin County

Karen Fang, Madison	Frances Schwemmer
Edward Forstman, Vestavia Hills	Yakov Kasman
Aleksandra Kasman, Vestavia Hills	Yakov Kasman
Samuel Kawell, Birmingham	Donna Shugart
Ji Na Kim, Montgomery	Ronald Shinn
Sarah Kim, Montgomery	Ronald Shinn
Jeong Woo Kho, Montgomery	Eun Yi Chung
Christina Lewis, Birmingham	Kevin Chance
Karen Li, Madison	Frances Schwemmer
Christian Mays, Birmingham	Ronald Shinn
Forrest Moody, Childersburg	Kevin Chance
Valentina Raman, Vestavia Hills	Naomi Brown
Nicholas Robertson, Bessemer	Nancy Wingard
Sylvia Wehrs, Auburn	Jeremy Samolesky
Do Il Yoon, Montgomery	Sarah Cheatham

Piano Solo, Division I

Elizabeth Brown, Anniston	Brent Reeves
Angelica Burgher, Montgomery	Barbara Shinn
Sabrina Chen, Huntsville	Kay Brotherton
Angela Cheng, Huntsville	Jay Yang
James Eaton, Madison	Hope Duve
Christy Gay, Geneva	Michelle Spears
Eamon Griffith, Gardendale	Amy McLelland
Catherine Guthrie, Huntsville	Marianna McCoy
Sarah Hale, Fairhope	Vincentine Williams
Sonia He, Birmingham	Susan Berg
Lillie Hobson, Dothan	Jeanne Focht
Leigh Hoitt, Mobile	Connie Sullivan
Daniel Huang, Muscle Shoals	Noel Beck
Rebecca Johnson, Madison	Susan Hoop
Alyssa Lamb, Birmingham	Gloria Bryant
Botong Ma, Vestavia Hills	Tatiana Kasman
Emma Reeves, Hoover	Brent Reeves
Rebecca Roberts, Birmingham	Jenny Halterman
Patrick Rumore, Birmingham	Susan Berg
Anna Sampson, Dothan	Lea Hornsby
Caroline Scott, Mobile	Elizabeth Petro
Jenny Shen, Madison	Nicky Wilson
Sarah Shi, Auburn	Elizabeth Rutland
Carley Smith, Mobile	Connie Sullivan
Emma Williams, Tuscumbia	Marian Gordon
Victoria Van, Madison	Nicky Wilson
Natalie Vlach, Birmingham	Jenny Halterman

AMTA State Honorable Mentions

Piano Concerto, Division III

Josephine Chen, Vestavia Hills	Tatiana Kasman
Alan Chou, Huntsville	Ingrid von Spakovsky Weaver
Jacynth Greywoode, Montgomery	Barbara Shinn
Mimi Kim, Madison.....	Frances Schwemmer
Tyler Winston, Spanish Fort.....	Vincentine Williams

Piano Concerto, Division II

Trevor Coingoli, Daphne.....	Barbara Laurendine
Ji Na Kim, Montgomery	Ron Shinn

Piano Concerto, Division I

Sarah Hale, Fairhope	Vincentine Williams
Emily Parham, Foley	Vincentine Williams
Collin Rishell, Spanish Fort	Vincentine Williams
Katelyn Simon, Montgomery	Theresa Gordon

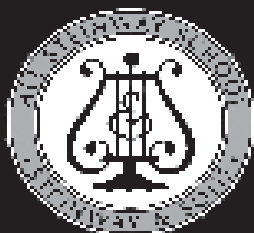
Piano Solo, Division III

Kali Berry, Gadsden.....	Susie Frances Dempsey
Rebecca Brewster, Mobile.....	Elizabeth Petro
Martin Castor, Pelham.....	Jonathan Brown
Jenny Chong, Dothan.....	Andy Martin
Jessica Choi, Mobile.....	Barbara Laurendine
Emily DeVoe, Mobile.....	Connie Sullivan
Kasie Elston, Montgomery.....	Corine Free
Rebekah Frederick, Huntsville	Lisa Belk
Adam Grigsby, Birmingham.....	Moya Nordlund
Michael Guthrie, Huntsville	Marianna McCoy
Jordan Hartford, Auburn.....	Elizabeth Rutland
Anna Hawkins, Hunstville	Hope Duve
Jason Hon, Huntsville	Patty Smith
Christy Hsu, Huntsville	Frances Schwemmer
Steven Hwang, Madison.....	Janet Holland
Lauren Ingram, Jacksonville	Susie Frances Dempsey
Jesse Kawell, Birmingham	Donna Shugart
Matthew Kelley, Birmingham.....	Jody Coombs
Chelsea Kendrick, Montevallo	Jodean Tingle
Mimi Kim, Madison.....	Frances Schwemmer
Joshua Kim, Montgomery.....	Ronald Shinn
Maranda Jennings, Enterprise	Carol Windham
Anna Lagrone, Birmingham	Donna Shugart
Mandy Liu, Birmingham	Donna Shugart
LaTiffany Magwood, Birmingham	Nancy Wingard
Kristen Mosley, Jasper.....	Kevin Chance
Madison Murphy, Birmingham	Alina Voicu

The University of Montevallo

**Department
of Music**
an All-Steinway School

*Inspired by the past,
Dedicated to the future*



Offering small class size
and personal attention
in a public liberal arts setting

Host of the 2009 AMTA Convention and AMTA State Auditions

Cynthia Jones and Anthony Pattin, Piano Faculty



Degrees Offered:

Bachelor of Music
Performance
Piano Pedagogy
Music Education

Bachelor of Arts in Music
Master of Education

www.montevallo.edu/music

To schedule a visit or sample lesson, contact Dr. Cynthia Jones,
Keyboard Area Head: 205-665-6667, jonescp@montevallo.edu

The "R" Word

Members who attended the AMTA conference in June have returned home with many fresh, new ideas to implement in their studios. Many times I marvel how one can ALWAYS come away from our summer conference with so many new ideas and inspiration! It is truly a shame that more members don't realize what a beneficial event this can be to keep one inspired to motivate individual students to each one's fullest capacity; be it concert musician, entertainer, or just a wonderful lifetime hobby! At this point, I suppose that most of you think I'm recruiting for the AMTA conference next year. Actually, I DO think it would be worth the time and money for any AMTA member to consider coming next year and evaluate yourself the benefits to be gained in your profession.

My purpose is, in fact, to urge ALL of you to fulfill your responsibility as a professional musician and contribute YOUR part to the MTNA Foundation. (Hence, the "R" word) The foundation is OUR foundation and is there to support us in our professional music careers. The programs offered through the foundation are designed for music teachers and students to further educate themselves and their respective communities. Each year grants are given for further education, travel expenses for students in competitions, and local, as well as, state conferences and programs to showcase and educate our communities on the importance of music and the arts in life. Our state and several of our local associations have had the blessing of these grants to help with special programs and events. Every single member of AMTA is also a member of MTNA. We all surely enjoy the benefits of membership: meetings, referrals, enrichment programs; and now we even have the opportunity for health insurance and other such perks. As a responsible member, it is us to EACH of us to support our foundation. It is a vital part of being a member. Each year we average contributions from only about 30 -40 our membership of over 300. I find this APPALLING!!!

Since I have taken over this position, we have raised our national standing in the nation from 48th. to 14th. in 2007 including the 51 states. Our total last year was \$2045.25.

This is not really that bad; but, if EVERY member would contribute \$10 each year, we could easily pull our standing to one of the top five. One year, we did, actually get to 4th position. I really don't think that any one of us is being neglectful; just not aware. This is your opportunity to become aware and do your part for our profession. I know that we all have expenses, bills, contributions to church, charities, etc. Our foundation is, however, our livelihood. Ten dollars is not a lot to ask for the future of our profession.

As an incentive this year, I have decided to get a special plaque to recognize each year at our state conference, the local association who has contributed the most to support our foundation each year. This will be done on a percentage basis. I realize that some associations are much larger than others; therefore, the percentage of the entire membership in each association will determine the winning association. Each year, a plate will be added to the plaque to honor that association. I am asking each and every one of you to encourage your membership to give generously (or just \$10) and have YOUR group be the first to receive this award in 2009!

At this point in time, we have 30 contributions totaling \$770. To each and every one of these, in behalf of the foundation, I thank each of you so much for generosity!! Look for ALL your names in the next Soundboard! For those of you who haven't already contributed, this is your opportunity and RESPONSIBILITY to get your name on this list of responsible members. Just send your contribution to:

MTNA Foundation
441 Vine Street, Suite 505
Cincinnati, OH 45202-2811

You may choose to go online at www.mtna.org and save a stamp. Either way, PLEASE be a responsible member and send your contribution to support our foundation; AND, possibly, help your local association to become the FIRST to be honored on our state plaque!

Connie Teague
MTNA Foundation Chair

CONTINUED FROM P.11

Ramsey Rossmann, Birmingham	Jodean Tingle
Brian Scott, Anniston.....	Karolyn Rice
Katelyn Simon, Montgomery.....	Theresa Gordon
Molly Sinclair, Vestavia Hills	Kathy Burdette
Elise Stone, Madison.....	Brooke Nabors
Jeanne Su, Huntsville	Hope Duve
Gareth Turner, Birmingham.....	Alice Butler
Clara Wan, Huntsville	Ingrid von Spakovsky Weaver
Philip Wang, Vestavia Hills.....	Tatiana Kasman
Sean Wang, Hoover.....	Amy McLelland
Nate Williams, Dothan	Janet Blair
Julia Wilson, Birmingham.....	Donna Shugart
Morgan Whetstone, Birmingham.....	Melody King
Diane Yang, Huntsville.....	Jay Yang
Jack Yarbrough, Maylene	Alice Butler
Yah'el Yisrael, Birmingham.....	Kevin Chance

Laura Nolen-Schmidt, Mobile	Elizabeth Petro
Neetu Scariya, Hampton Cove	Janet Holland
Amy Shannon, Montgomery	Beverly Shaffer
Jonathan Shieh, Birmingham	Ronald Shinn
Ben Simon, Montgomery	Theresa Gordon
Mary Ellen Taylor, Sylacauga	Betty Gillum
Julie Yi, Vestavia Hills	Tatiana Kasman

Piano Solo, Division II

Abigail Acker, Anniston	Karolyn Rice
Caleb Braun, Birmingham	Jenny Halterman
Matthew Brown, Huntsville	Kay Brotherton
Bonny Chen, Auburn	Yanina Gorodnitskaya
Trevor Coingoli, Daphne	Barbara Laurendine
Esther Clarke, Florence	Noel Beck
Kyle Coleman, Glencoe	Kathy Thompson
Kaci Davidson, Anniston	Donna May
Alex Davis, Daphne	Sue Trosclair
Madge Ellis, Sylacauga	Betty Gillum
Alison Griffitt, Sylacauga	Betty Gillum
Rebecca Guindon, Vestavia Hills	Charlotte Clarkson
Yifan Guo, Birmingham	Betty Bridges
Holly Guthrie, Huntsville	Marianna McCoy
Grace Ann Hobson, Dothan	Jeanne Focht
Carmen Johnson, Birmingham	Jenny Halterman
Rainey Ketcham, Wilsonville	Susan Berg
Seon Kang, Montgomery	Corine Free
Will Keyton, Dothan	Andy Martin
Ahry Ko, Mobile	Barbara Laurendine
Emily Lin, Hoover	Jonathan Brown
Jinn Liu, Vestavia Hills	Tatiana Kasman
Christopher Joseph Leitten, Birmingham	Donald Sanders
Kimberly McCroskey, Montgomery	Theresa Gordon
Angeline Nguyen, Madison	Hope Duve
Natalie Nguyen, Madison	Hope Duve
Brooke Pinyan, Dothan	Andy Martin
Carrie Sedlak, Montgomery	Betty Gallops
Min Ji Suh, Montgomery	Eun Yi Chung
Daniel Tankersley, Vestavia	Connie Macon
Ashley Vechinski, Madison	Susan Hoop
Caleb Weaver, Homewood	Connie Macon
Mary Elizabeth Wilson, Trussville	Jodean Tingle
Philip Wolfe, Hunstville	Anna Sunwoo

Piano Solo, Division I

Hannah Alexander, Prattville	Donna Wilson
Elizabeth Bemis, Bay Minette	Robert Holm

Sebastian Black, Birmingham Tatiana Kasman
 Caitlyn Boley, Dothan Janet Blair
 Nicholas Bolin, Hanceville..... Debora Chalkley
 Jenna Brittain, Anniston..... Karolyn Rice
 Briana Burdick, Daphne..... Margaret Guenther
 Alexander Candelaria-Fouse, Birmingham..... Kathryn Fouse
 Kristen Chambliss, Prattville..... Ruth Graham
 Hannah Cherry, Prattville Donna Wilson
 Austin Cheshire, Fairhope Vincentine Williams
 Travis Chin, Montgomery..... Theresa Gordon
 Justin Cox, Millbrook Sally Hester
 Vi Dang, Madison Wendy Bramhall
 Richard Fuller, Prattville..... Ruth Graham
 Alyssa Garmon, Glencoe Judith Hicks
 Adrian Gose, Hoover Jonathan Brown
 Elizabeth Haberstroh, Birmingham Jody Coombs
 Abigail Hagood, Montgomery..... Betty Gallops
 Young-Seo Heo, Montgomery..... Sarah Cheatham
 Kaitlyn Hill, Montgomery..... Summer Whatley
 Vivian Ho, Mobile..... Connie Sullivan
 Joseph Hoekenga, Dothan..... Jeanne Focht
 Rebekah Horton, Birmingham..... Jenny Halterman
 Caitlynn Hunt, Decatur Gayle Metcalf
 Suren Jamiyanaa, Birmingham..... Adam Bowles
 Zachary Jones, Birmingham Alice Butler
 Christopher Kawell, Birmingham Donna Shugart
 Braidyn Lazenby, Prattville..... Donna Wilson
 Zachary Lee, Anniston Donna May
 Soojin Lee, Huntsville..... Hope Duve
 Charles Li, Vestavia Hills Barbara Shinn
 Silin Li, Vestavia Hills Kathy Burdette
 Annie Lian, Madison..... Nicky Wilson
 Gina Liu, Madison..... Frances Schwemmer
 Anna Beth Mann, Birmingham Melodie King
 Coco McKay, Birmingham Barbara Shinn
 Monica Mendenhall, Chelsea..... Alice Butler
 Bryant Moore, Eufala Susan Bishop
 Joshua Moore, Birmingham..... Brent Reeves
 David Mok, Madison Hope Duve
 Hannah Mouyal, Birmingham Jody Coombs
 Brian Park, Hunstville..... Frances Schwemmer
 Hayley Patterson, Decatur Gayle Metcalf
 Haley Perritt, Killen Gail Spires
 Lauren Portera, Vestavia Hills..... Kathy Burdette
 Brian Poythress, Leeds Brent Reeves
 Jurnee Promisee, Tuskegee Judy Bell
 Phillip Reeves, Hoover Brent Reeves
 Collin Rishell, Spanish Fort Vincentine Williams

A Letter from the State Auditions Chair....

Dear Teachers,

Originally, this letter was only going to the 40% of teachers who had errors on their State Auditions paperwork; however, I decided that everyone who participates in our audition needs to be acquainted with the process. District Auditions Chairs go through much the same process on a smaller level, so these errors at any level do make a difference! And, please understand that this **truly** makes a difference when there are 110 teachers sending some 440 students. For every time I have to finish YOUR paper work, send an email or call with a question, it costs me valuable time that I need to work out this schedule.

Let me describe a little about what this process entails. A week after the first District Audition, I start receiving entries. Every envelope has to be opened, the student sheets and teacher application sheets receive a code and I check for accuracy. A few of the more common errors are failing to asterisk the convention choice piece, not filling in the durations for the pieces (or saying they are all 4".....which is probably less than accurate!) , failing to correctly mark the division (which MATTERS at State Auditions, since students must be judged with their division) and (yes this happens) not putting the students' name on his or her form. An issue which require more time is neglecting to fill out paperwork for concerto entries.....which must have their own teacher application forms or at the very least have them listed again on the same form with solos. And, of course, some teachers have multiple instances of those issues listed above. If I have to ask every year for a typed list of your students, please consider filling out the forms online.....or at least just go on and include the typed list. If a District Chair can't read the handwriting it only affects the schedule sheets.....if I can't read it, the certificates (all of which are typed by me) are liable to be incorrect. And then there's checking for proper fees paid and the ever popular Stamped Self Addressed Envelope. When you leave off the stamp, count on getting your times by email, or having to call me for them.....those envelopes just get trashed. (I actually look forward to the day that we can omit the SASE because you will all be getting your students' times by e-mail.) When you send me two copies of the Student Audition Form, one of them gets trashed.....there's no need for two copies of that when they'll be judged by one judge! When you fold your sheets into origami like shapes and cram them into a small envelope, it wreaks havoc on all the careful stacks of paper all over the two tables taking up most of my living room from April 1 to May 20 or so.

All of the above comes before the fun of scheduling. Concerto entrants are scheduled first because I have to be sure I don't have an accompanist playing in two rooms at once. And when a student is the accompanist for siblings, it's a real schedule nightmare to work out all the concerto times, then make sure none of the solo times are in conflict.....or even very close to the concerto times in case a judge runs late. The rest of the Friday schedule pretty much revolves around making sure the concerto schedule works with the solo schedule. Judges are assigned specific divisions, so when I have three Division II judges and fourteen people wanting to play at 1 pm, please realize it's impossible to honor all the requests. Schedule requests are a great help to me, but if they are honored within an hour or two, it may just be the best I could do. Friday start times are totally dependent on the number of entrants, so Divisions may start at different times entirely. Usually only concerto divisions have to start Friday morning; having enough Friday solos to require a.m. times is a real rarity. If there is no schedule request, I must assume that I can put that student wherever I have space; *if playing on Friday is impossible, I need to know that.....in writing, on the form.* Friday time requests are always welcome; we always need students to fill that afternoon!

And then there are the "schedule with" issues. When siblings are playing in different divisions and only one student form has the scheduling request on it, it may be impossible to honor the request. If you have three students with the last name of Smith, but put no request on the forms, please do not expect me to be a mind reader and know which ones are siblings. When siblings study with different instructors, the requests **MUST** go on both forms, or it just isn't going to happen.

All of these issues can be avoided by simply reading.....read the Student Activities Handbook, read the letter which comes with your Outstanding students' forms from District auditions, and read the Soundboard. Divisions are simple, really.....Division I is 10-11 year olds, Division II is 12-14 year olds, Division III is 15-18 year olds. Concerto Divisions are identical. The **ONLY** factor influencing division placement is the student's age.....not his theory level, not the level you believe that he or she plays, but the literal age of the student as of September 1st of the school year.

I guess I felt the need to write this because I've now done this job for twelve years. I will be giving it up at some point in the foreseeable future, and would really love for my successor to be able to simply do the scheduling job and not have the number of errors to deal with every year that I've seen. I realize fully that we are all human and we all can make mistakes, but I also believe that the number of problems with these forms can be greatly diminished if everyone is just a little more careful. When filling out these forms, please feel free to ask if you have a question; ask me, ask your District Chair, ask members who've entered students for many years. But please think of the person in this job who essentially stops their life (including their teaching!) for a month or so to do this task and help make it as easy as possible.

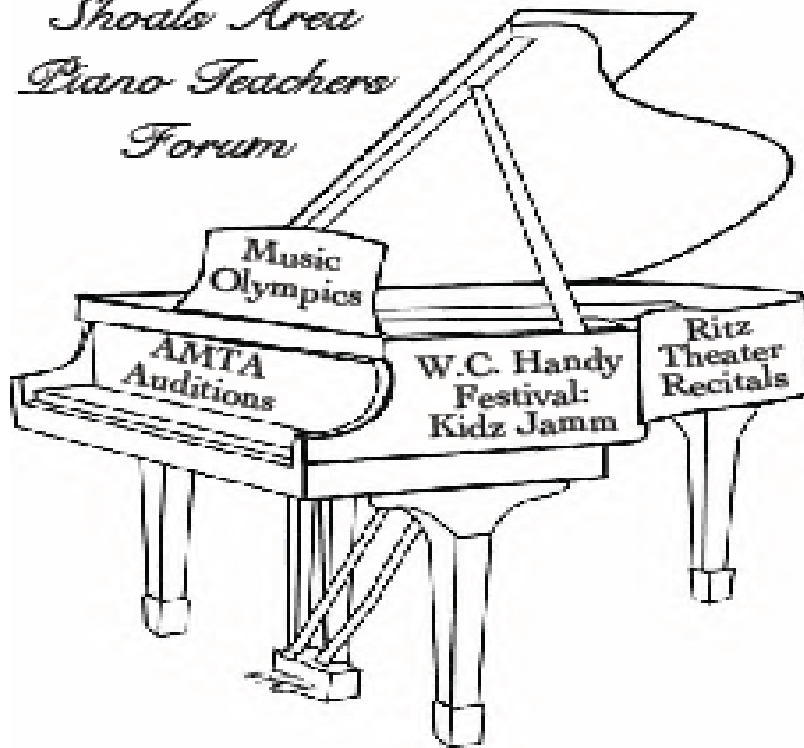
Thank you for your time and patience in reading this! And the next time you see your District Chair, thank her for a job well done!

Sincerely,

Debbie Gray, NCTM

State Auditions Chair, AMTA

*Shoals Area
Piano Teachers
Forum*



Noel Beck
 Robert Beck
 Rosamund Black
 Yi-Min Cai
 Elizabeth Counts
 Lynne Crabtree
 Christine Enlow
 Wanda Gilmore
 Marian Gordon
 Carol Lynn
 Carrie Marks
 Anita Scott
 Kristie Smith
 Gail Spires



Wiregrass Music Teachers' Forum

Major Events:

*Hymn Festival (November)
 Sonata Festival (February)
 Honors' Recital (May)*

*President: Hilda Hagins
 Vice-President: Janet Blair
 Secretary/Treasurer: Jeanne Focht*

Scholarships presented to summer music campers and college music majors!

Christy Robeson, Dothan.....	Lea Hornsby
Julianna Rosborough, Birmingham	Donna Shugart
Ramsey Rossmann, Birmingham	Jodean Tingle
Brian Scott, Anniston.....	Karolyn Rice
Katelyn Simon, Montgomery.....	Theresa Gordon
Molly Sinclair, Vestavia Hills	Kathy Burdette
Elise Stone, Madison.....	Brooke Nabors
Jeanne Su, Huntsville	Hope Duve
Gareth Turner, Birmingham.....	Alice Butler
Clara Wan, Huntsville.....	Ingrid von Spakovsky Weaver
Philip Wang, Vestavia Hills.....	Tatiana Kasman
Sean Wang, Hoover.....	Amy McLelland
Nate Williams, Dothan	Janet Blair
Julia Wilson, Birmingham.....	Donna Shugart
Morgan Whetstone, Birmingham.....	Melody King
Diane Yang, Huntsville.....	Jay Yang

AMTA STATE STRING WINNERS 2008

Division I --Winners

Diane Yang, violin, Huntsville, AL
 Nina Li, teacher

Helena Bandy,violin, Owens Cross Roads, AL
 Noriko Shimura, teacher

Joanne Kim, violin, Birmingham, AL
 Ai-Yi Bao, teacher

Arielle Rush, violin, Harvest, AL
 Dr. Renee Collins-Williams, teacher

Division II – Winner

Lindsey South, violin, Huntsville, AL
 Jeffrey Dortch, teacher

Division III – Winner

Peter John Leitten, cello, Vestavia Hills, AL
 – **Henry Barrett Award --**

Avi Friedlander, teacher

Lower Concerto – Winner

Veronica Marino, violin, Huntsville, AL
 Nina Li, teacher

Drew Sarette, violin, Huntsville, AL
 Nina Li, teacher

Upper Concerto – Winner

DaYong Lee, viola, Madison, AL
 Noriko Shimura, teacher

Lower Chamber Music – Winner

Marino Trio

Veronica Marino, violin, Huntsville, AL

Rebecca Marino, violin, Huntsville, AL

Nina Li, teacher

Lily Deng, piano, Huntsville, AL

Frances Schwemmer, teacher

Upper Chamber Music – Winner

Park Trio

Michelle Park, violin, Huntsville, AL

Drew Sarette, violin, Huntsville, AL

Rachael Eason, viola, Huntsville, AL

Nina Li, teacher

AMTA STATE STRING HONORABLE MENTION WINNERS

Division I Honorable Mention Winners

Ian Chen, violin, Huntsville. AL

Jeffrey Dortch, teacher

Tina Tian, violin, Madison, AL

Jeffrey Dortch, teacher

Division II Honorable Mention Winners

Veronica Marino, violin, Huntsville, AL

Nina Li, teacher

Rebecca Marino, violin, Huntsville, AL

Nina Li, teacher

Anna Davenport, violin, Birmingham, AL

Ai-Yi Bao, teacher

Division III Honorable Mention Winners

Dayong Lee, viola, Madison, AL

Noriko Shimura, teacher

Rachel Eason, viola, Huntsville, AL

Nina Li, teacher

Lower Concerto Honorable Mention Winners

Cooper Paddison, violin, Hampton Cove, AL

Nina Li, teacher

Michelle Park, violin, Huntsville, AL

Nina Li, teacher

Lower Chamber Music Honorable Mention Winner

Ding Trio

Christina Ding, violin, Madison, AL

Jenny Shen, violin, Madison, AL

Nina Li, teacher

Karen Li, piano, Madison, AL

Frances Schwemmer, teacher

(TECH.) The most positive aspects of the MusicPad Pro are the ability to store thousands of sheets of music in something the size of a single book, and the ability to turn pages with a touch of the screen. Also, pages will never blow off the stand outdoors. A big negative should be mentioned, however: like most LCD screens, the image is nearly impossible to read outdoors in bright sunlight.

All-in-all, I think the MusicPad Pro is a big step forward for musicians, particularly those who deal with lots of paper. I plan to use mine in conducting the university jazz ensemble this fall, so please come check it out.

Don Bowyer
 Educational Technology Chair
 (Pictures on page 16)

BOARD OF DIRECTORS 2008-2009

State President

Kevin Chance
1800 8th Avenue North
Birmingham, AL 35203
205-870-9156 h
205-252-9241 w
kvchance@asfa.k12.al.us

Secretary**Historian**

Sarah Cheatham
1651 Sheffield Rd.
Montgomery, AL 36107
334-462-1741
scheatham@huntingdon.edu

Collegiate Chapters/**College Faculty Forum**

Melinda Brooks, NCTM
2701 Wyeth Dr.
Guntersville, AL 35976
256-582-7655
mbrooks@snead.edu

Local Associations Chair

Barbara Shinn, NCTM
1636 Kestwick Drive
Birmingham, AL 35226
205-834-8321 (home)
334-324-5022 (Cell)
bashinn@gmail.com

State Foundation

Constance H. Teague
15120 Teague Ln. #A
Foley, AL 36535-3065
251-979-7130
ctnotes@gulftel.com

Immediate Past President**Awareness and Advocacy**

Kathryn Fouse, NCTM
3168 Bradford Place
Birmingham, AL 35242
205-726-2489

klfouse@samford.edu

Web Contact/Educational**Technology**

Don Bowyer
224 Spring Valley Ct.
Huntsville, AL 35802
256-658-2537
256-824-6411 (FAX)
bowyerd@email.uah.edu

State Certification

Kathryn Burdette, NCTM
2312 Derby Drive
Birmingham, AL 35216
205-979-6862
oubruce@bellsouth.net

MNTA Competitions Chair**(Young Artist, Senior,
Junior, and Chamber
Music)**

Laura Doss
1800 8th Ave. N
Birmingham, AL 35203
205-252-9241
ldoss@asfa.k12.al.us

1st Vice-President**(President Elect)**

Cynthia Jones
1351 Highland Street
Montevallo, AL 35115
(205) 655-5445
jonescp@montevallo.edu

2nd Vice-President**(Membership)**

Karolyn Rice
1000 Homarda Drive
Anniston, AL 36207
(256) 237-4073
ricedk@juno.com

Treasurer

Susan Berg, NCTM

3205 Monte D'Este Way
Birmingham, AL 35216
205-978-9055
susanruckerberg@gmail.com

**Independent Music
Teachers Forum**

Frances Schwemmer, NCTM
126 Robin Ln. SE
Huntsville, AL 35802-1002
256-881-6879
eddosch@aol.com

**Composition Competi-
tion/Commissioning**

Charles Mason
900 Arkadelphia Rd.
Box 549033
Birmingham, AL 35254
205-226-4950
cmason@bsc.edu

Newsletter Editor

Jodean Tingle
1411 Mitchell Rd. NW
Cullman, AL 35055
205-226-4991
jtingle@bsc.edu

MTNA/AMTA Judges**Coordinator**

Diana Pettit
26755 Pine Drive
Athens, AL 35613
(256) 230-6826
diana34006@msn.com

Awards Chair

Brett Dollar
6490 Cambridge Rd.
Pinson, AL 35126
205-680-3020
santalane@hotmail.com

Clinician

Melodie King
2116 Montreat Ln. #A

Birmingham, AL 35216
205-823-9453
mmking@samford.edu

Public Relations

Susan Bishop
751 County Road 9
Louisville, AL 36048
334-266-5540
pecans@mindspring.com

**State Auditions Coordi-
nator**

Debbie Gray, NCTM
1417 Secretariat Dr.
Helena, AL 35080
205-664-3179
lilygray@charter.net

Grant Writer

Brent Reeves
3508 Laurel View Road
Hoover, AL 35216
(205) 979-6472
brentreevespi-ano@bellsouth.net

**AMTA Collegiate/Non-
Piano, Non-Strings Audi-
tions Coordinator**

Moya Nordlund
5228 Meadow Garden Ln.
Birmingham, AL 35242
205-980-8170
mlnordlu@samford.edu

Advertising Chair

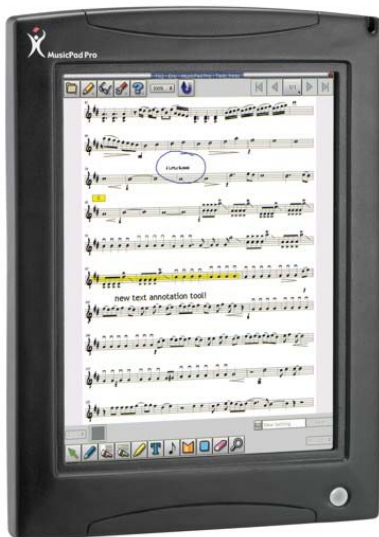
Connie Macon, NCTM
341 Red Maple Dr.
Columbiana, AL 35051-3753
205-726-2810
chmacon@samford.edu

ALABAMA MTA LOCAL PRESIDENTS 2007-2008

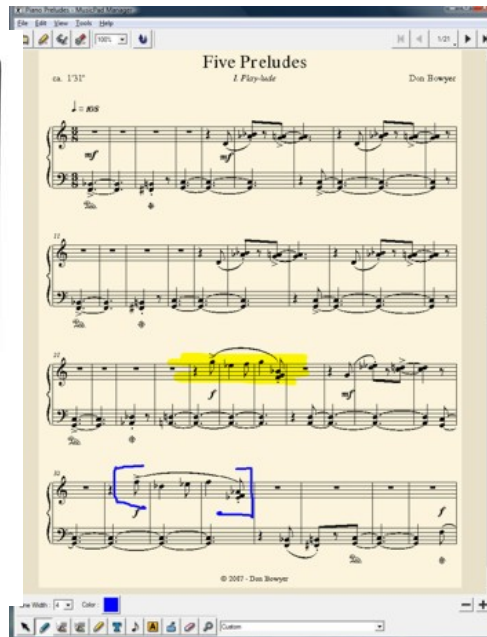
Auburn Opelika MTA	126 Robin Ln. SE	256-582-7655
Mary Slaton	Huntsville, AL 35802-1002	mbrooks@snead.edu
708 3rd Ave.	256-881-6879	Shoals Area PTF
Opelika, AL 36801	eddosch@aol.com	Anita Scott
334-749-5252	Mobile MTA	1367 County Farm Road
meslaton@bellsouth.net	Linda Pierce	Tuscumbia, AL 35674
Metro Music Forum	18024 John Cumbest Rd.	256/314-1088
Melodie King	Pascagoula, MS 39562	ascottpiano@aol.com
2116 Montreat Ln. #A	228-588-6523	West Alabama MTA
Birmingham, AL 35216	228-588-6523	Muriel D. Vitt
205-823-9453	mshin@mindspring.com	2939 Sunset Dr.
mmking@samford.edu	Montgomery MTF	Tuscaloosa, AL 35404
Baldwin County MTA	Ann Pilcher Thorington, NCTM	205-553-0886
Karen Hicks	2935 Old Farm Road	mvitt567@aol.com
114 Mockingbird Lane	Montgomery, AL 36111	Wiregrass MTF
Fairhope, AL 36532	334-265-8154	Hilda H. Hagins, NCTM
251-928-2267	apt334@aol.com	113 Redwing Dr.
kphicks@bellsouth.net	Northeast Alabama MTA	Enterprise, AL 36330
Huntsville MTA	Melinda Brooks, NCTM	334-347-7526
Frances Schwemmer, NCTM	2701 Wyeth Dr.	hhagins@aol.com
	Guntersville, AL 35976-2635	



A PUBLICATION OF THE ALABAMA MUSIC TEACHERS ASSOCIATION
AFFILIATED WITH THE MUSIC TEACHERS NATIONAL ASSOCIATION



Tilt



Sample color



With stand